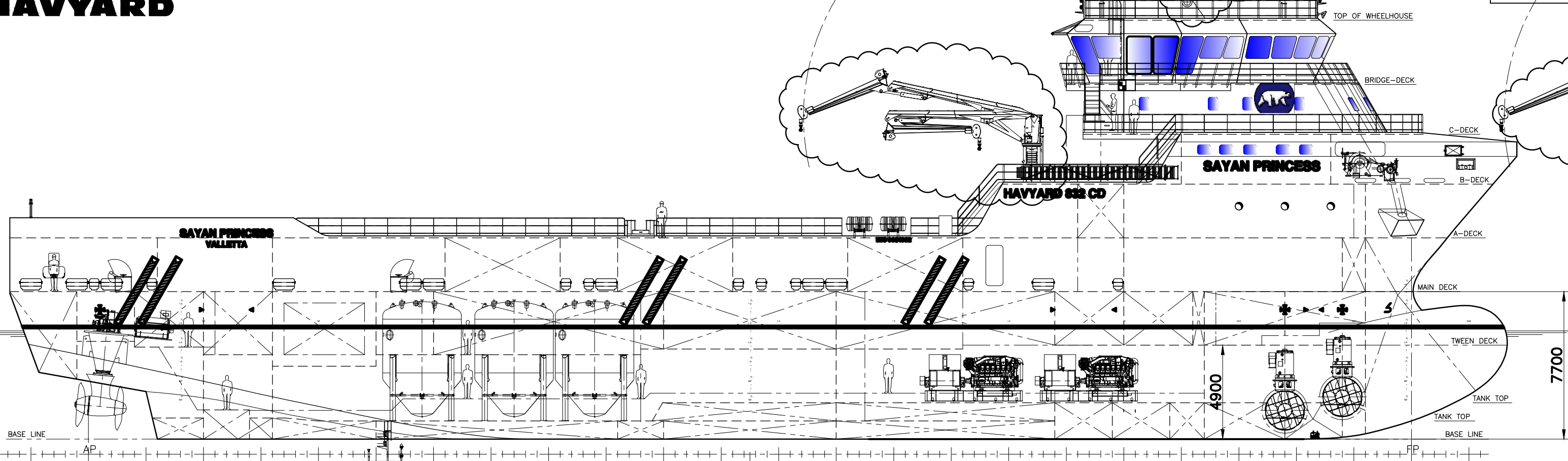
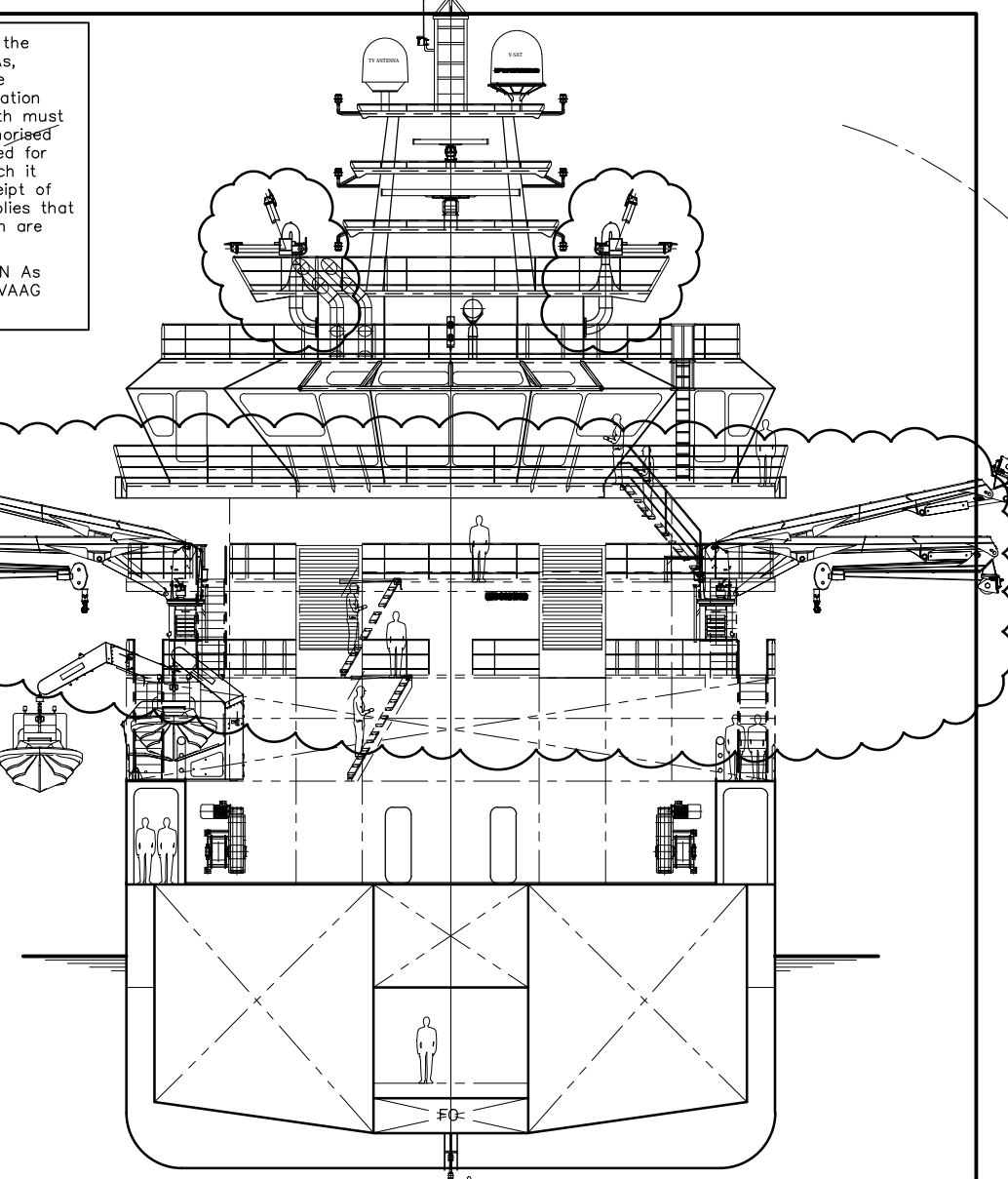


This drawing / specification is the property of HAVYARD DESIGN AS, and must not be copied or the contents thereof or any information received in conjunction therewith must not be imparted to any unauthorised third party. It must not be used for any other project than for which it was originally ordered. No receipt of the drawing / specification implies that the conditions mentioned herein are accepted.

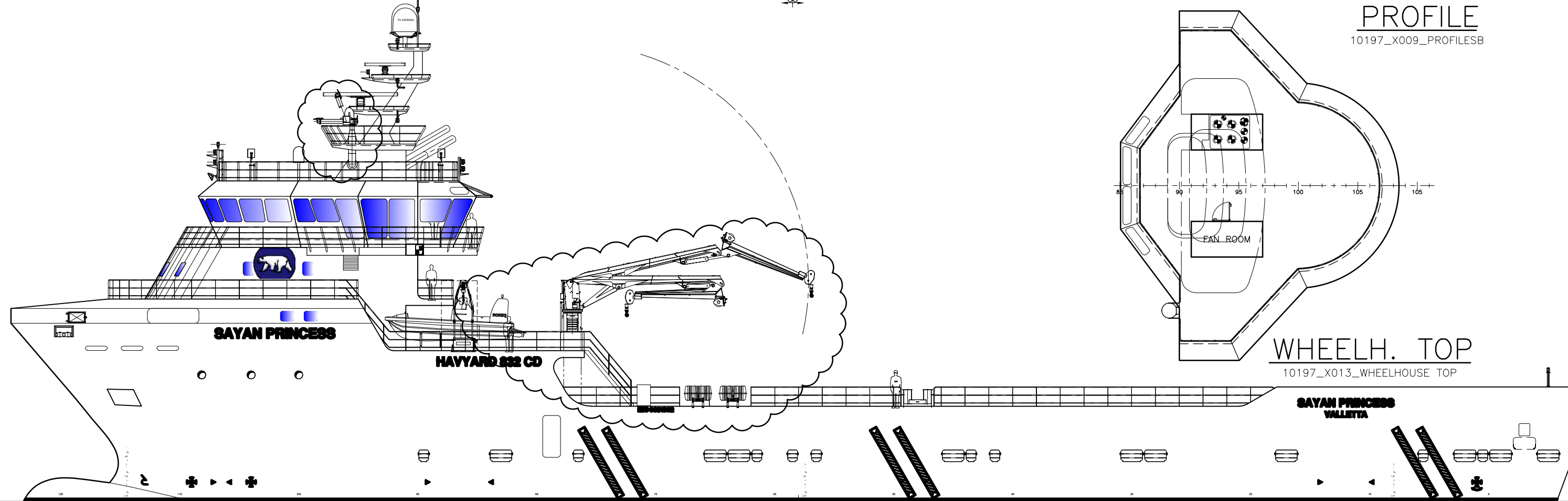
HAVYARD DESIGN AS  
N-6099 FOSNAVAAG  
NORWAY



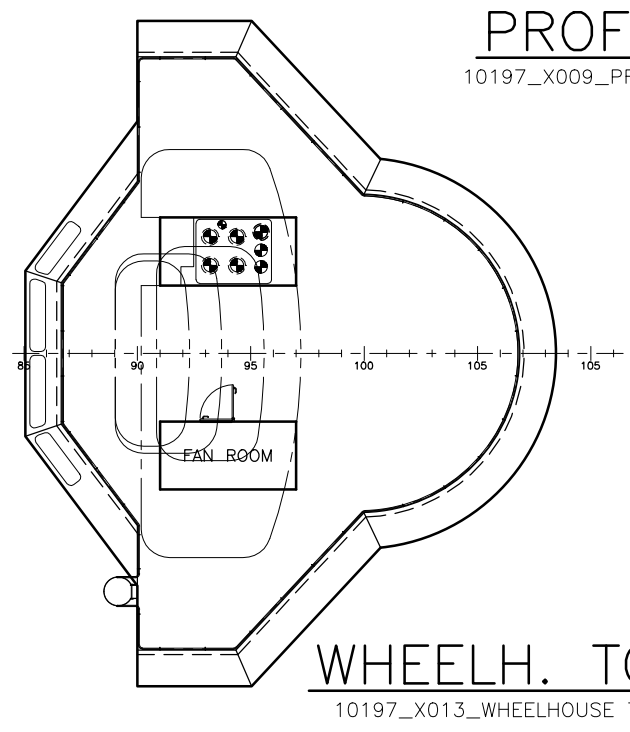
**PROFILE**  
10197\_X009\_PROFILESB



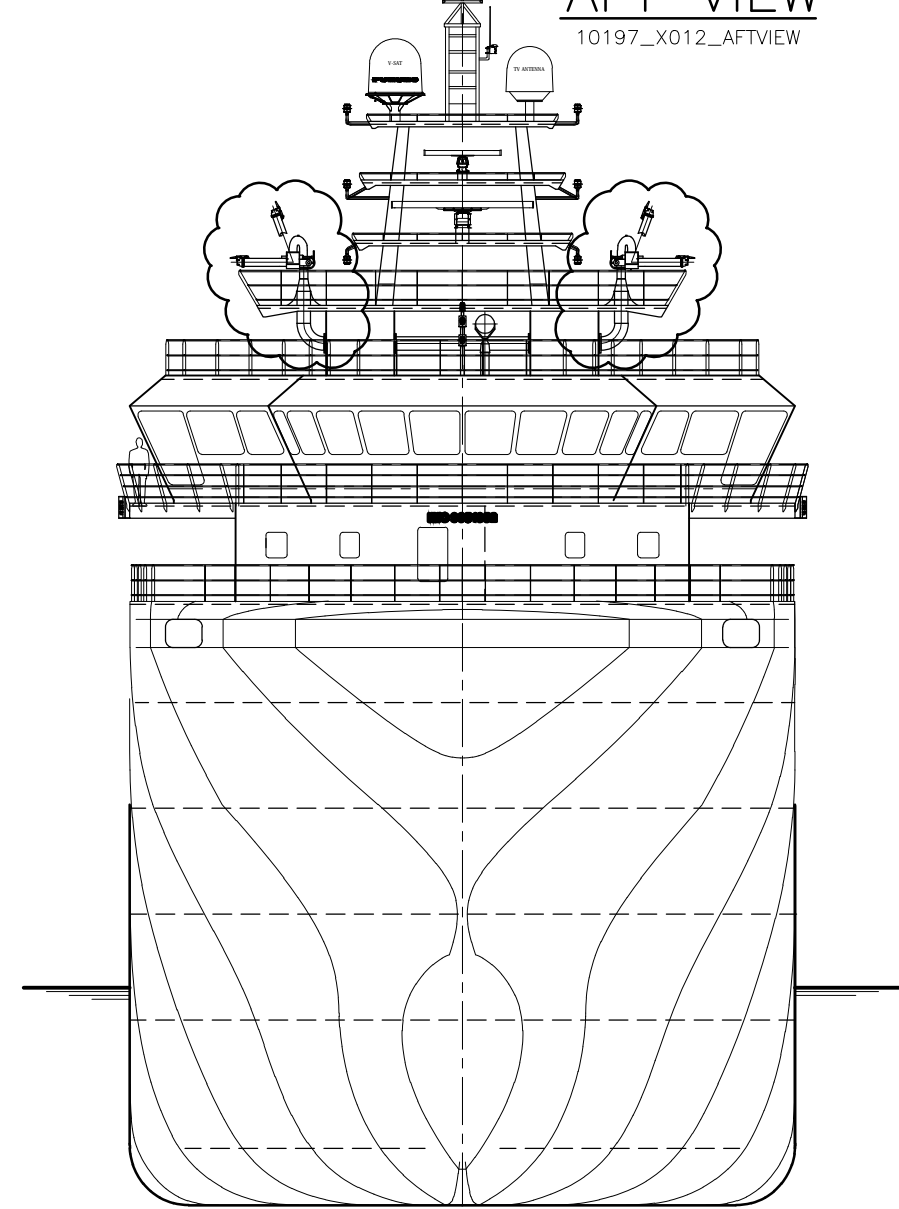
**AFT VIEW**  
10197\_X012\_AFTVIEW



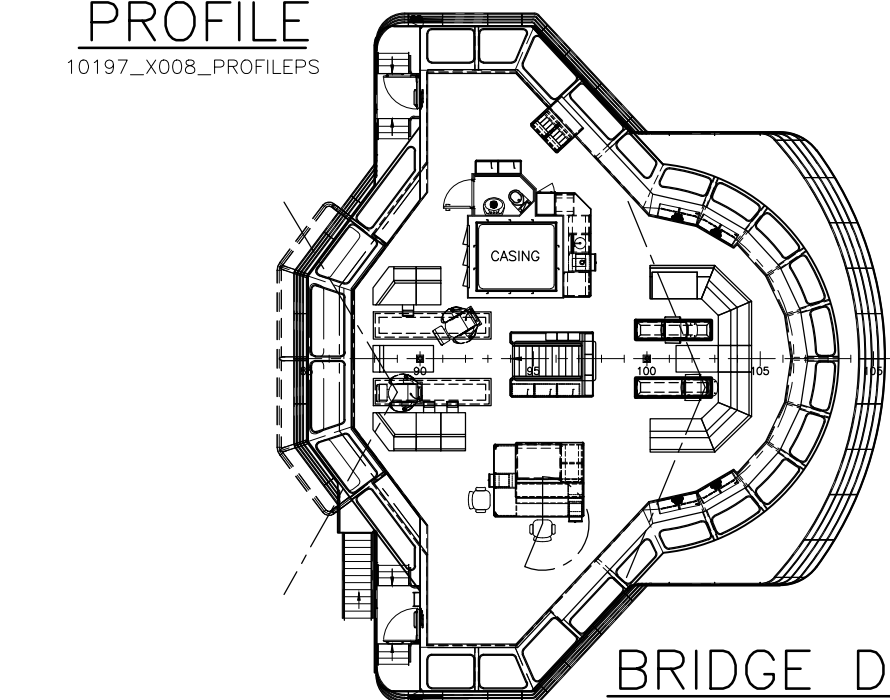
**PROFILE**  
10197\_X008\_PROFILESB



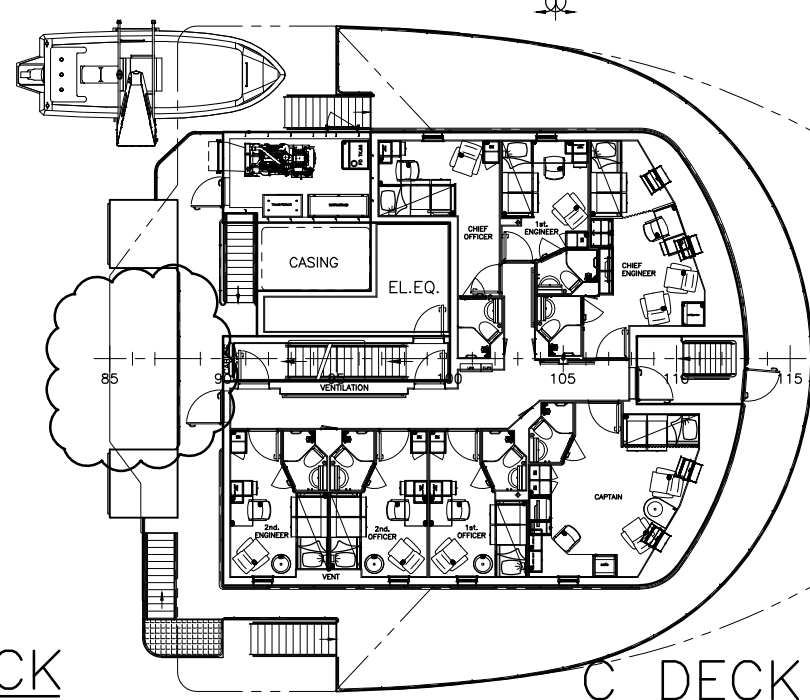
**WHEELH. TOP**  
10197\_X013\_WHEELHOUSE TOP



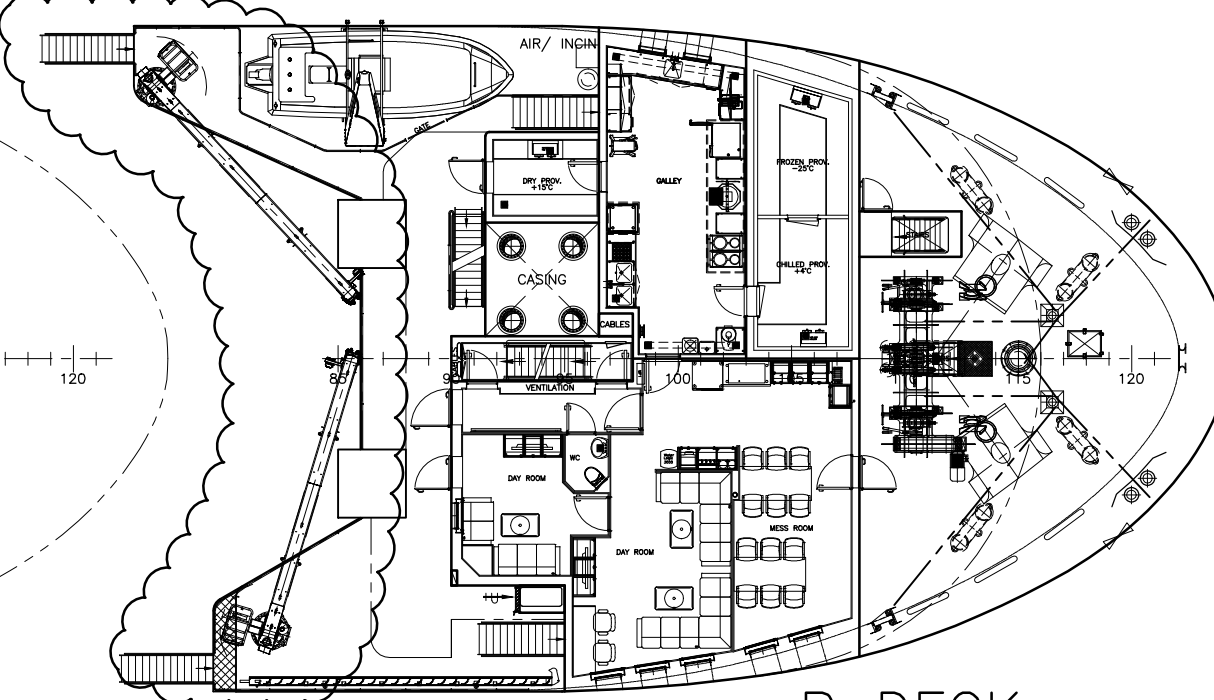
**FRONT VIEW**  
10197\_X010\_FRONTVIEW



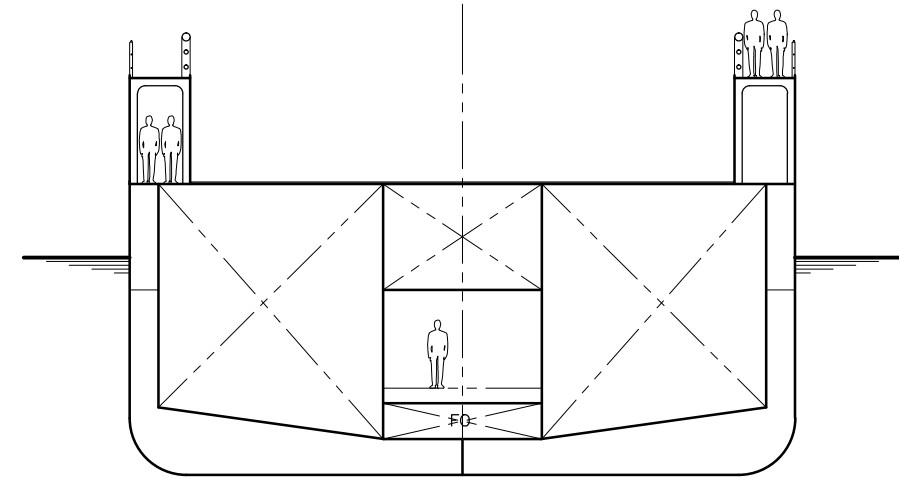
**BRIDGE DECK**  
10197\_X007\_BRIDGEDECK



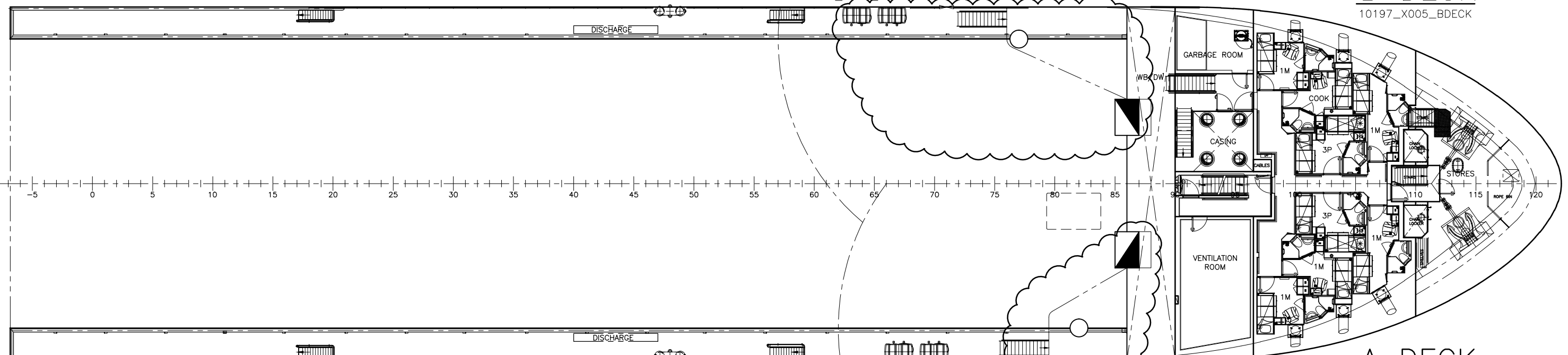
**C DECK**  
10197\_X006\_CDECK



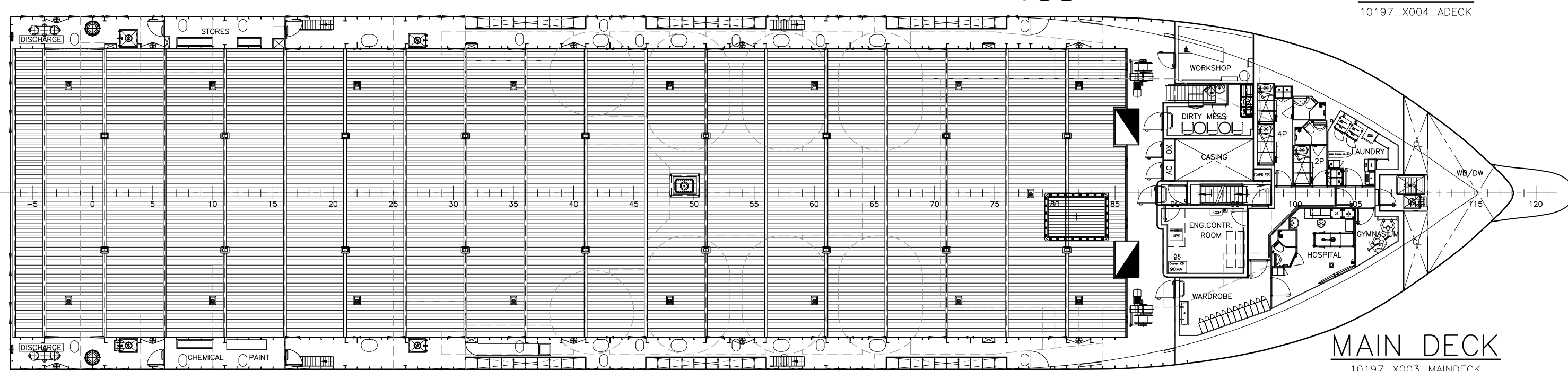
**B DECK**  
10197\_X005\_BDECK



**MIDSHIP SECTION**  
10197\_X011\_MIDSHIP SECTION



**A DECK**  
10197\_X004\_ADECK



**MAIN DECK**  
10197\_X003\_MAINDECK

**MAIN PARTICULARS:**

- LENGTH OVER ALL : 78.60 m
- LENGTH BETW. PERP'S : 69.00 m
- BREADTH : 17.60 m
- DEPTH TO TWEEN DECK : 4.90/4.40 m
- DEPTH TO MAIN DECK : 7.70 m
- DEPTH TO A DECK : 10.50 m
- MAXIMUM DRAUGHT : 6.60 m
- FRAME SPACING : 0.60 m

SPEED : ~14.5 KNOTS AT WL 5.00 m (2x1600 kW)

DEADWEIGHT : ~4000 TON AT WL 6.60 m  
DEADWEIGHT : ~2200 TON AT WL 5.00 m

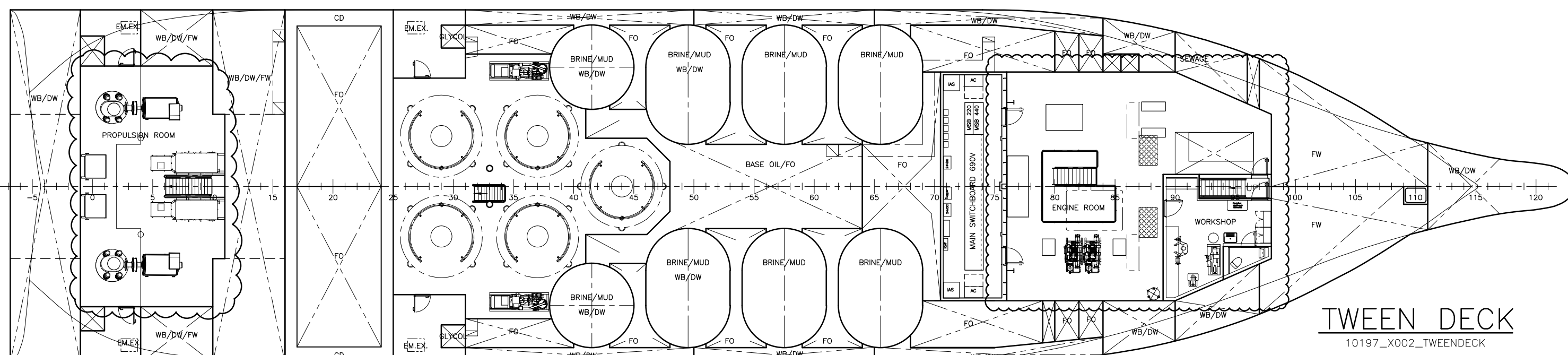
ACCOMMODATION : 25 PERSONS  
: 13 CREW  
: 12 PASSENGER

**CLASS:**

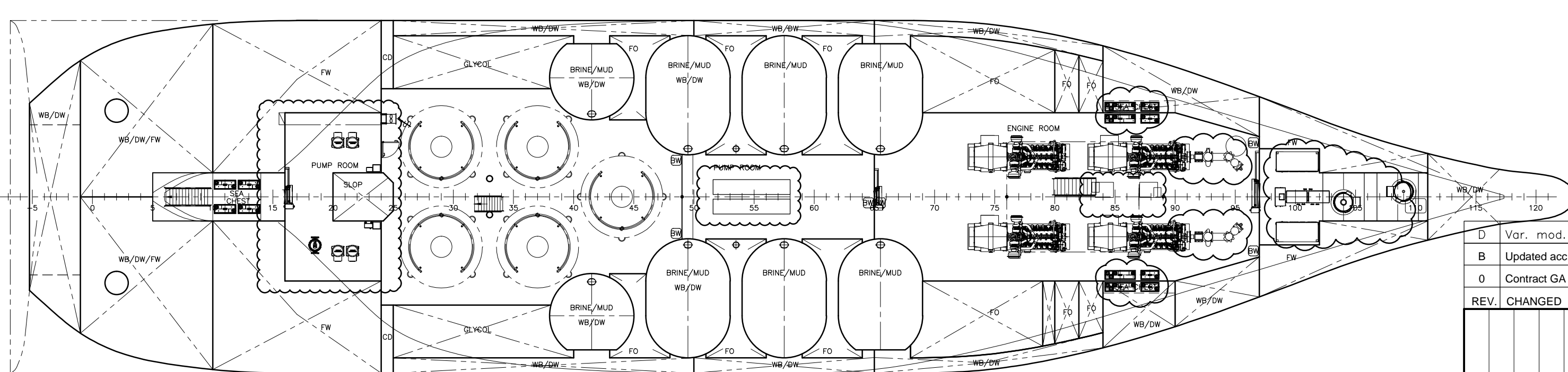
DnV + 1A1 - SF - EO - HL(2.8) - DK+ (FIFI I)  
DYNPOS-AUTR - CLEAN DESIGN - NAUT OSV(A) - COMF-V(3)

**CAPACITIES:**

- DECK AREA : ~ 800m<sup>2</sup> (55.5 x 14.4m)
- FUEL OIL : ~ 1075m<sup>3</sup>
- FRESH WATER : ~ 820m<sup>3</sup>
- WATER BALLAST : ~ 2355m<sup>3</sup>
- DRILLING WATER : ~ 2355m<sup>3</sup>
- DRY CARGO : ~ 300m<sup>3</sup>
- MUD : ~ 975m<sup>3</sup>
- BRINE : ~ 975m<sup>3</sup>
- BASE OIL : ~ 150m<sup>3</sup>
- GLYCOL : ~ 150m<sup>3</sup>
- SLOP : ~ 20m<sup>3</sup>



**TWEEN DECK**  
10197\_X002\_TWEENDECK



**TANK TOP**  
10197\_X001\_TANKTOP

D	Var. mod.	19.01.12/PTF	E	General update	17.10.12/PTF
B	Updated acc. to comments	10.05.11/af	C	Diff. mod.	25.08.11/egl
0	Contract GA	09.03.11/PTF	A	Var. mod.	02.05.11/PTF
REV. CHANGED		DATE/SIGN.	REV. CHANGED		DATE/SIGN.
YARD No./PROJECT: HAVYARD 832 CD					
<b>GENERAL ARRANGEMENT</b>					
<b>78.6 X 17.6 M PSV</b>					
DATE:	26.01.11	CHECKED:	SCALE:	1:200	FORMAT:
DRAWN:	AHL	PLOTTED:	17.10.12	A1	CUSTOMER:
			TBA		
			TBA		
				IMO:	9651852
				REV.	E
				DRAWING NO.:	10197-101-001
				YARD DRAWING NO.:	TBA